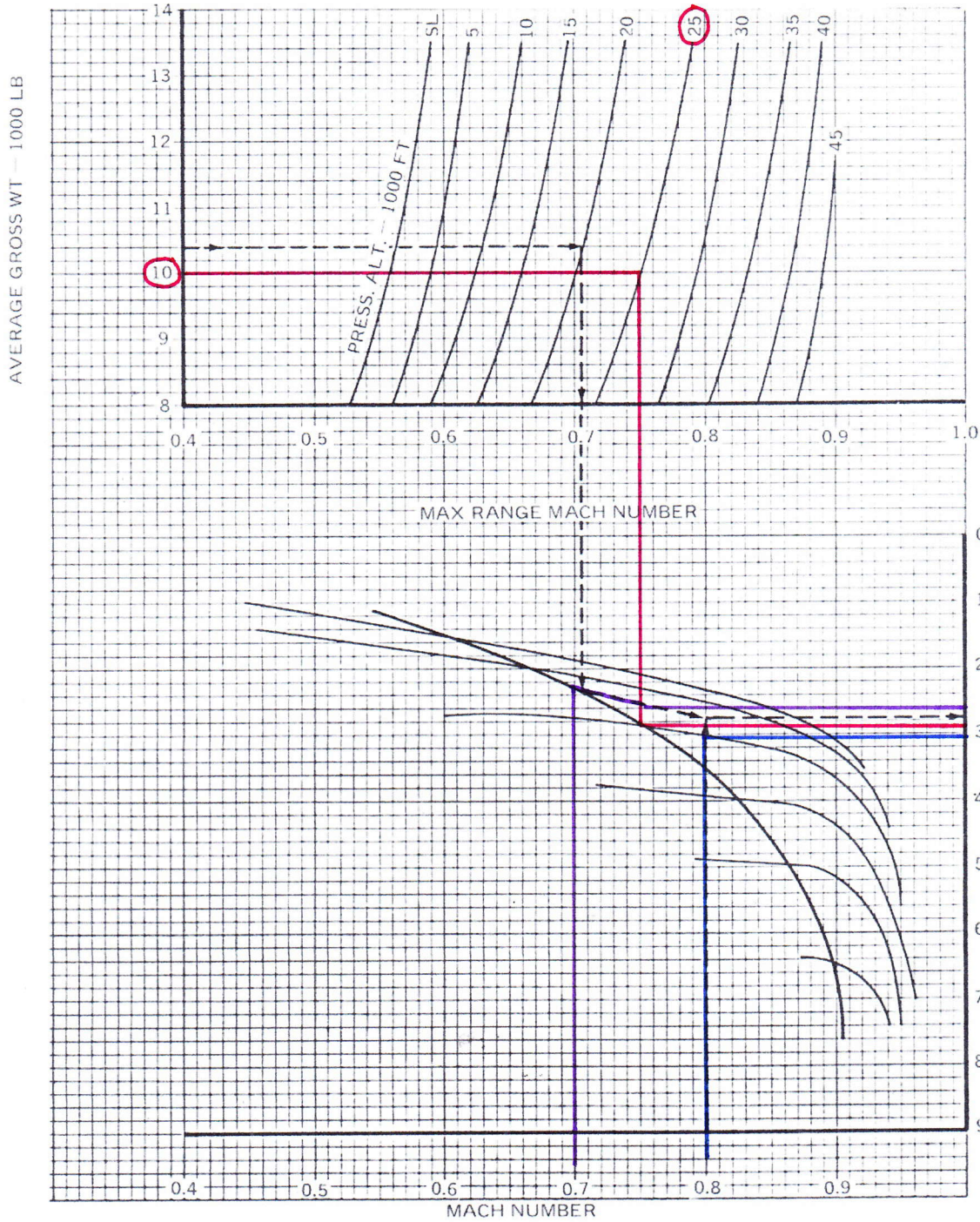


CRUISE

MACH NUMBER AND REFERENCE NUMBER

MODEL: T-38A
 DATE: 1 OCTOBER 1976
 DATA BASIS: ESTIMATED DATA

ENGINE: (2) J85-GE-5
 FUEL GRADE: JP-4
 FUEL DENSITY: 6.5 LB/US GAL



25,000'
 10,000 lb
 gwt

2.6 @ M70
 2.9 @ M75
 3.1 @ M80

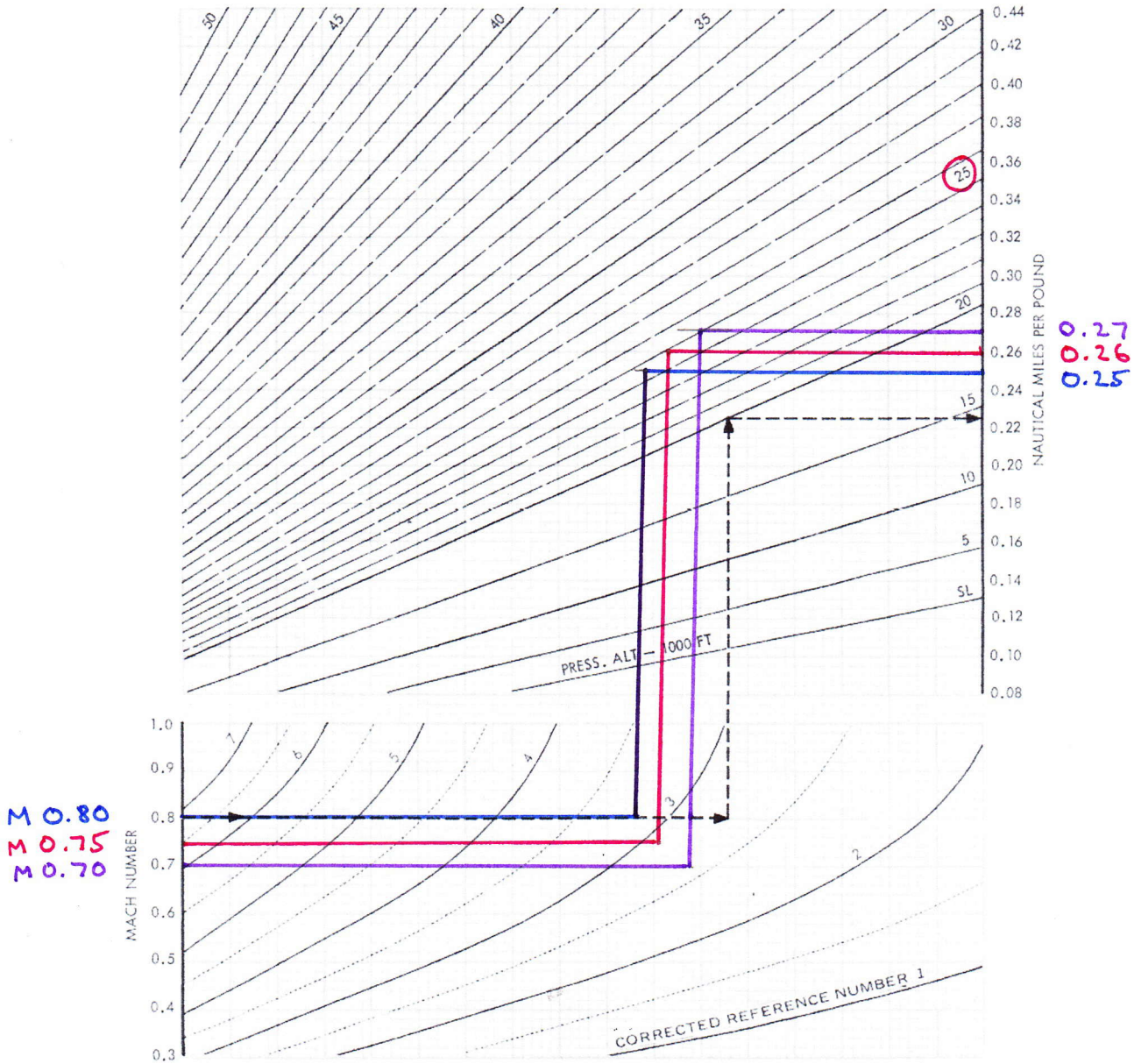
FA4-1. (Sheet 1)

0.70 0.80

CRUISE NAUTICAL MILES PER POUND

MODEL: T-38A
DATE: 1 OCTOBER 1976
DATA BASIS: ESTIMATED DATA

ENGINES: (2) J85-GE-5
FUEL GRADE: JP-4
FUEL DENSITY: 6.5 LB/US GAL

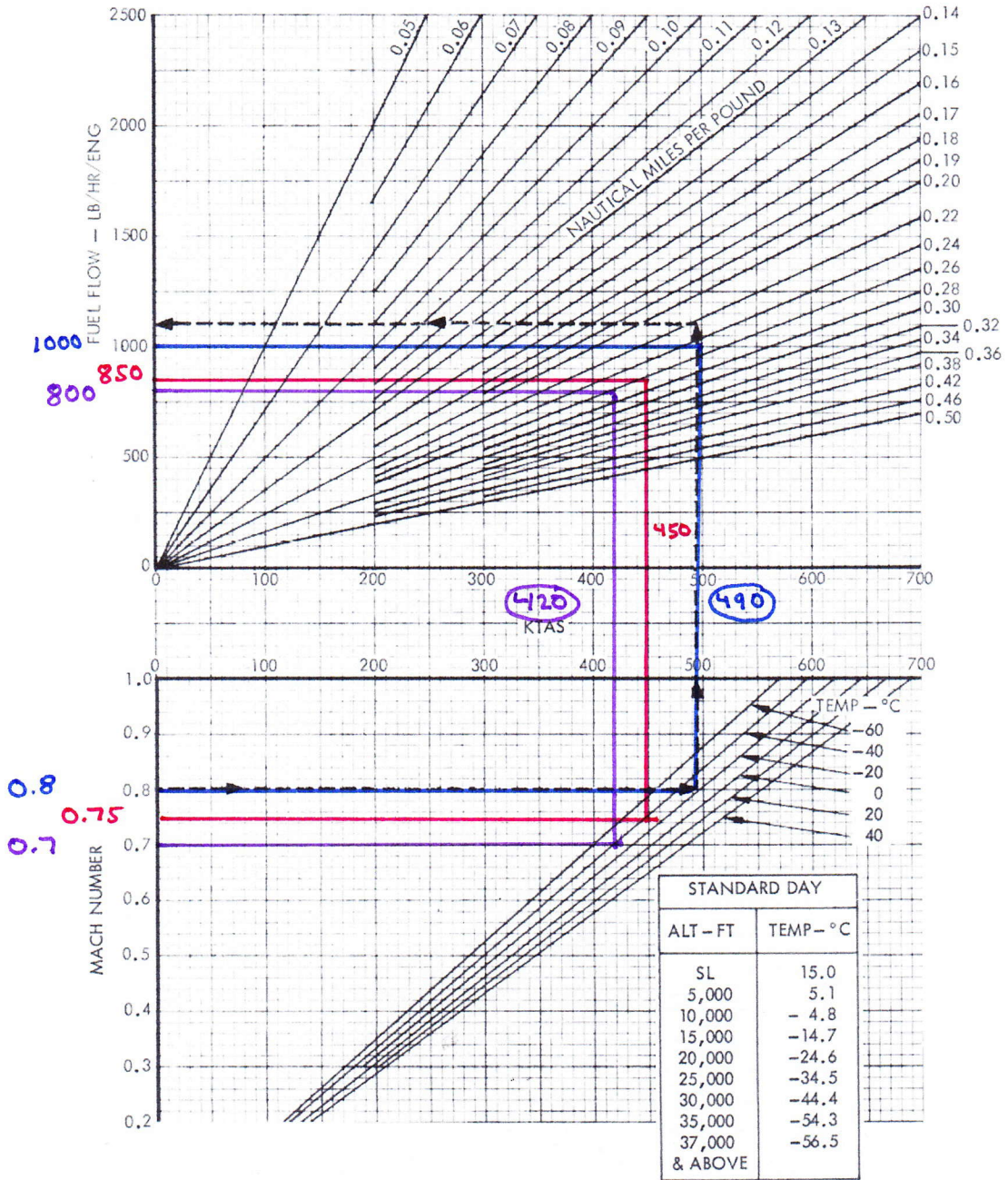


T-38A 1-652(2)C

CRUISE FUEL FLOW AND TRUE AIRSPEED

MODEL: T-38A
DATE: 1 OCTOBER 1976
DATA BASIS: ESTIMATED DATA

ENGINES: (2) J85-GE-5
FUEL GRADE: JP-4
FUEL DENSITY: 6.5 LB/US GAL



T-38A 1-652(3)C